



DESCRIPTION

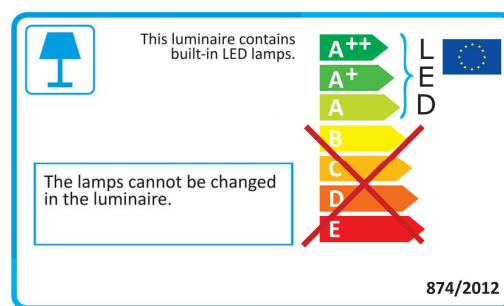
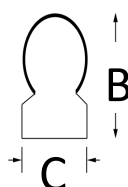
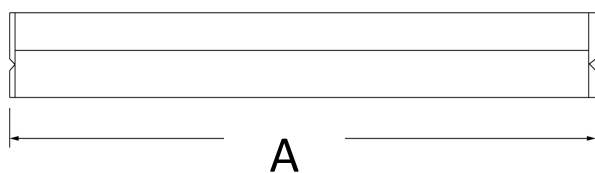
LED linear system with opal cover.
High resistance polycarbonate body
Hard connector (included) to avoid multiple line connection or 25cm /50cm wire (options)
Beam angle 140°
High power LED SMD 2835















IP20



Dimensions



ORDERING DATA

Model	Dimensions			Wattage	Color temperature	Luman flux	Weight
	A	B	C				
SX82053	309 mm	35 mm	22 mm	5 W	3000 K 	420 lm	0,10Kg
SX82054	309 mm	35 mm	22 mm	5 W	4000 K 	450 lm	0,10Kg
SX82056	309 mm	35 mm	22 mm	5 W	6500 K 	500 lm	0,10Kg
SX82093	569 mm	35 mm	22 mm	9 W	3000 K 	810 lm	0,15Kg
SX82094	569 mm	35 mm	22 mm	9 W	4000 K 	850 lm	0,15Kg
SX82096	569 mm	35 mm	22 mm	9 W	6500 K 	900 lm	0,15Kg
SX82133	874 mm	35 mm	22 mm	13 W	3000 K 	1250 lm	0,18Kg
SX82134	874 mm	35 mm	22 mm	13 W	4000 K 	1280 lm	0,18Kg
SX82136	874 mm	35 mm	22 mm	13 W	6500 K 	1300 lm	0,18Kg
SX82183	1177 mm	35 mm	22 mm	18 W	3000 K 	1720 lm	0,21Kg
SX82184	1177 mm	35 mm	22 mm	18 W	4000 K 	1750 lm	0,21Kg
SX82186	1177 mm	35 mm	22 mm	18 W	6500 K 	1800 lm	0,21Kg

The information contained in catalogues or advertising, as products specifications or components, dimensions, assembly drawings, colors, etc., are only approximative. The binding data may be provided from time to time and upon explicit request. In order to improve the quality of the products, the Nordex Illuminazione srl reserves to modify it without any notice. The Nordex Illuminazione srl reserves to make changes or reductions to the products and price lists without notice declining any responsibility for any inaccurate data